

TEXTURED EASY LOCK BLOCK



Concrete Pavers • Stone Pavers • Tiles • Garden Walls & Edging
Retaining Walls • Concrete Sleepers • Concrete Blocks • Wall Cladding

TEXTURED EASY LOCK BLOCK



FEATURES

- Near Vertical Walls
- Do it Yourself
- No Concrete Footings Required
- Lightweight, quick and easy installation
- Free samples available

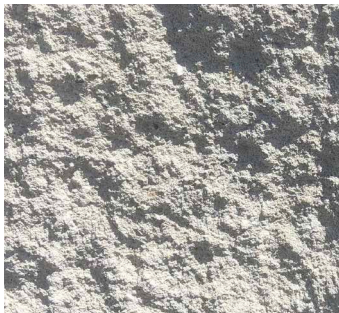
SUITABLE FOR

- Straight and curved retaining walls
- Garden walls and beds
- Steps and firepits
- Terraced walls
- Boundary walls with fence on top

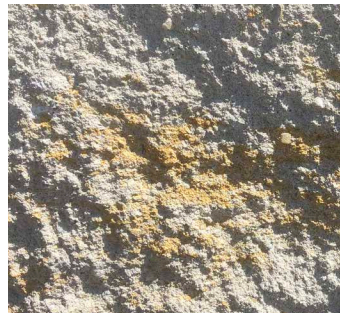
Specifications	Size (w x h x d)	No. per m ²	Weight per unit	Units per pallet
Wall Block	390 x 200 x 225mm	12.8	23.33kg	75
Full Corner	340 x 200 x 145mm	N/A	16.63kg	96
Cap	200 x 60 x 225mm	N/A	5.35kg	300

COLOUR RANGE*

Opal White



Yellow Rock



Appin Stone



Charcoal



*Colours are an indication only. Always sight physical product colour samples before purchase.



www.australianpaving.com.au

[f](#) [@](#) [australianpavingcentre](#)



Retaining Wall Builder

Our builder helps you choose the right block for your project. Scan the QR code to get started.