

BLACK GRANITE



Concrete Pavers • Stone Pavers • Tiles • Garden Walls & Edging
Retaining Walls • Concrete Sleepers • Concrete Blocks • Wall Cladding

BLACK GRANITE



FEATURES

- Durable and hardwearing
- Salt and stain resistant
- Free samples available

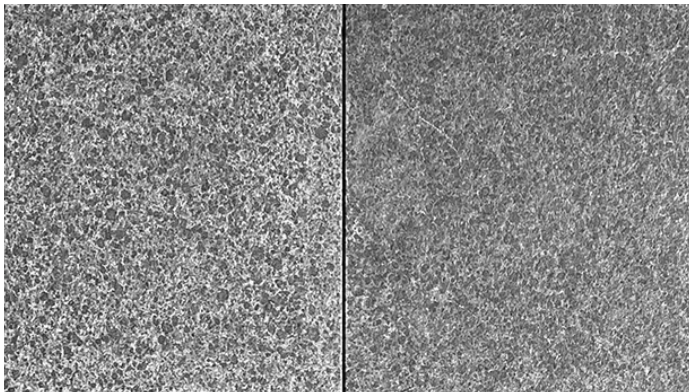
SUITABLE FOR

- Pool areas
- Indoor and outdoor applications
- Courtyards, entertaining areas and patios
- Garden paths, stepping stones and walkways

Specifications	Size	No. per m ²	Weight per m ² OR unit	m ² per pallet OR unit
Paver	400 x 400 x 30mm	6.25	90kg	11.2
Bullnose & Aris Edge	400 x 400 x 30mm	N/A	14.4kg each	70 units
Drop Face	600 x 400 x 30/70mm	N/A	23kg each	40 units

COLOUR RANGE*

Black Granite



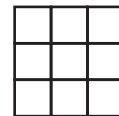
*Colours are an indication only. Always sight physical product colour samples before purchase.



www.australianpaving.com.au

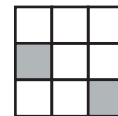
  [australianpavingcentre](https://www.australianpavingcentre.com.au)

UNIFORM APPEARANCE



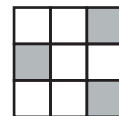
V1

SLIGHT APPEARANCE



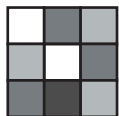
V2

MODERATE APPEARANCE



V3

SUBSTANTIAL APPEARANCE



V4